

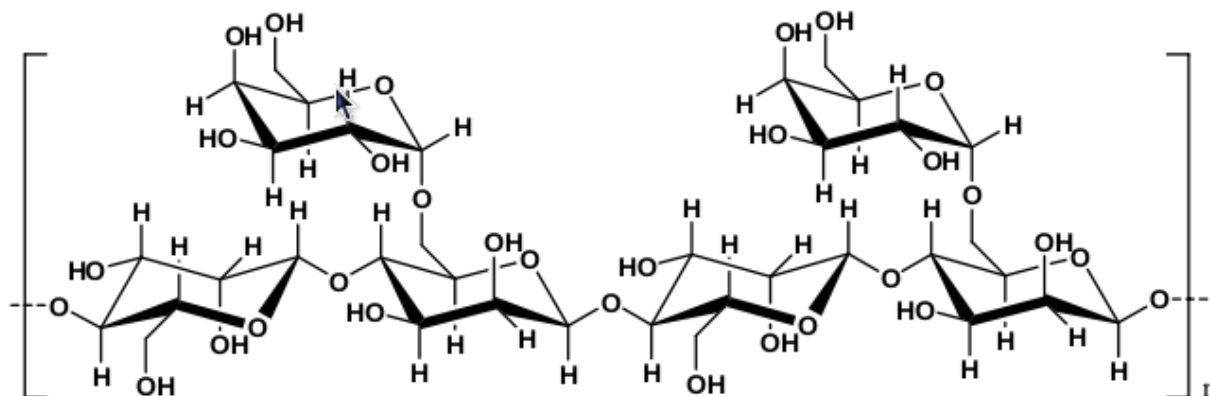


Basic information	<p>Chemically, guar gum is a carbohydrate polymer containing galactose and mannose as the structural building blocks. The molar ratio of galactose to mannose is about 1:2. Guar gum is an edible carbohydrate polymer and is found in the seeds of two annual leguminous plants, namely <i>Cyamopris tetragonalobus</i> and <i>Psoraloids</i>.</p> <p>Guar Gum Refined Splits (Endosperm) is the sole raw material for processing Guar Gum Powder for Industrial and Food Grade material.</p>
Uses	Natural thickener, Emulsifier, Stabilizer, Bonding agent, Hydrocolloid, Gelling agent, Soil Stabiliser, Natural fiber, Flocculant, Fracturing agent.
Solubility	Guar gum will disperse and swell almost completely in cold or hot water. It is insoluble in organic solvents.
CAS Number	9000-30-0
EEC No. of Guar Gum Powder	E412
BT No. of Guar Gum Powder	1302.3290
EINECS No. of Guar Gum Powder	232.536.8
Imco-Code	Harmless
HS-Code of Guar Gum Powder	130.232.30
21 Code of Federal Regulation	184.1339
APPEARANCE	OFF WHITE
MOIST	12% MAX
PROTEIN	5% MAX
FIBRE	4% MAX
FAT	0.6% MAX
ASH	7% MAX
PH	5.5 - 8
ACID INSOLUBLE RESIDUE	3.5% MAX
GUM CONTENT	80-83%
PARTICLE SIZE	THROUGH 200 MESH
DISTRIBUTION	SIEVE 97% MINIMUM



VISCOSITY	THROUGH 2500 CPS
ASH	7% MAX
Reactivity Profile	GUAR GUM is a ether-alcohol derivative, the ether being relatively unreactive. Flammable and/or toxic gases are generated by the combination of alcohols with alkali metals, nitrides, and strong reducing agents. They react with oxoacids and carboxylic acids to form esters plus water. Oxidizing agents convert alcohols to aldehydes or ketones. Alcohols exhibit both weak acid and weak base behavior. They may initiate the polymerization of isocyanates and epoxides.

Chemical Structure of Guar Gum



For more Information on Guar Gum and its Derived Products such as Sodium Carboxymethyl Guar (NaCMG), Carboxymethyl Guar(CMG), Methyl Carboxymethyl Guar (MCMG) and other Hydrophobically Modified Guar Gum, please contact us at : dominic@guargum.com.au